

Human FCER2(CD23) Protein; His Tag

Product Information

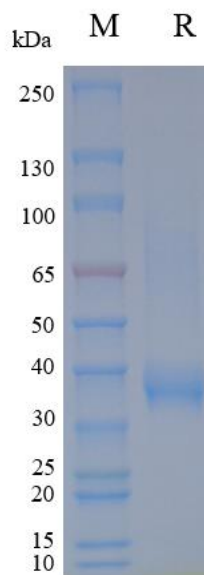
Product Name	Human FCER2(CD23) Protein; His Tag
Storage temp	Store at $\leq -70^{\circ}\text{C}$, stable for 6 months after receipt. Recommend to aliquot the protein into smaller quantities for optimal storage. Please minimize freeze-thaw cycles.
Catalog# / Size	GM-88157RP-100 / 100 μg GM-88157RP-1000 / 1 mg

Protein Information

Alternative Names	FCER2, CD23, CD23A, CLEC4J, FCE2, IGE2, Fc ϵ RII, Fc ϵ R II
Source	Human FCER2(CD23) Protein; His Tag (GM-88157RP) is expressed from human 293 cells (HEK-293). It contains AA Asp 48 - Ser 321 (Accession # P06734-1). This protein carries a His tag at the N-terminus.
Purity	> 90% as determined by SDS-PAGE
Endotoxin	< 1 EU/ μg , determined by LAL gel clotting assay
Predicted Mol Mass	31.8 KDa
Formulation	Supplied as a 0.2 μm filtered solution of PBS, pH7.2-7.4.
Description	<p>FCER2, also known as CD23 or FcϵRII, is a C-type lectin-like receptor predominantly expressed on B cells, with additional expression on dendritic cells, eosinophils, and some epithelial and endothelial cells. It acts as a low-affinity receptor for IgE and plays multiple roles in regulating IgE synthesis, B cell activation, antigen presentation, and humoral immune responses. By modulating BCR signaling and influencing cytokine production, FCER2/CD23 helps balance allergic inflammation and immune tolerance; its activity is regulated by proteolysis and soluble forms, which can modulate IgE levels and allergen responses.</p> <p>Beyond IgE biology, FCER2 participates in immune complex clearance and may influence lymphocyte adhesion and migration under certain conditions. Genetic variations and differential expression of FCER2 can affect susceptibility to allergic diseases such as asthma and allergic rhinitis and the magnitude of IgE responses. Understanding FCER2 regulation, alternative splicing, and interactions within the FcϵRII complex provides avenues for therapies aimed at modulating IgE-mediated immunity and allergic inflammation.</p>

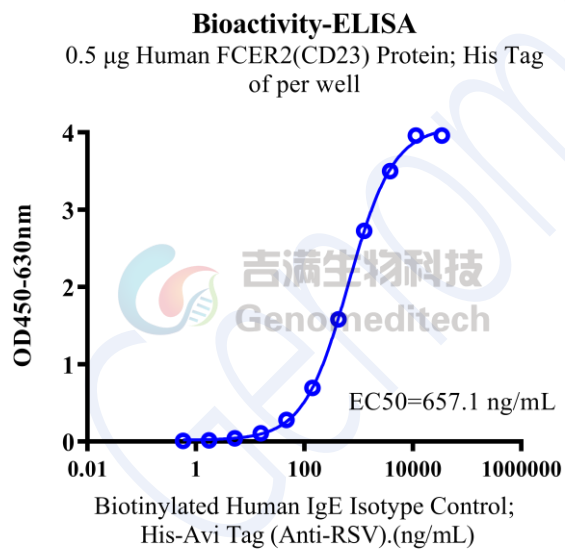
Version:4.0

SDS-PAGE



On SDS-PAGE under reducing (R) condition. The gel was stained overnight with Coomassie Blue. The purity of the protein is greater than 90%.

Bioactivity-ELISA



Human FCER2(CD23) Protein; His Tag (Catalog # GM-88157RP) was immobilized at 5 μ g/ml (100 μ L/well). Increasing concentrations of Biotinylated Human IgE Isotype Control; His-Avi Tag (Anti-RSV) (Catalog # GM-88131MAB) were added.